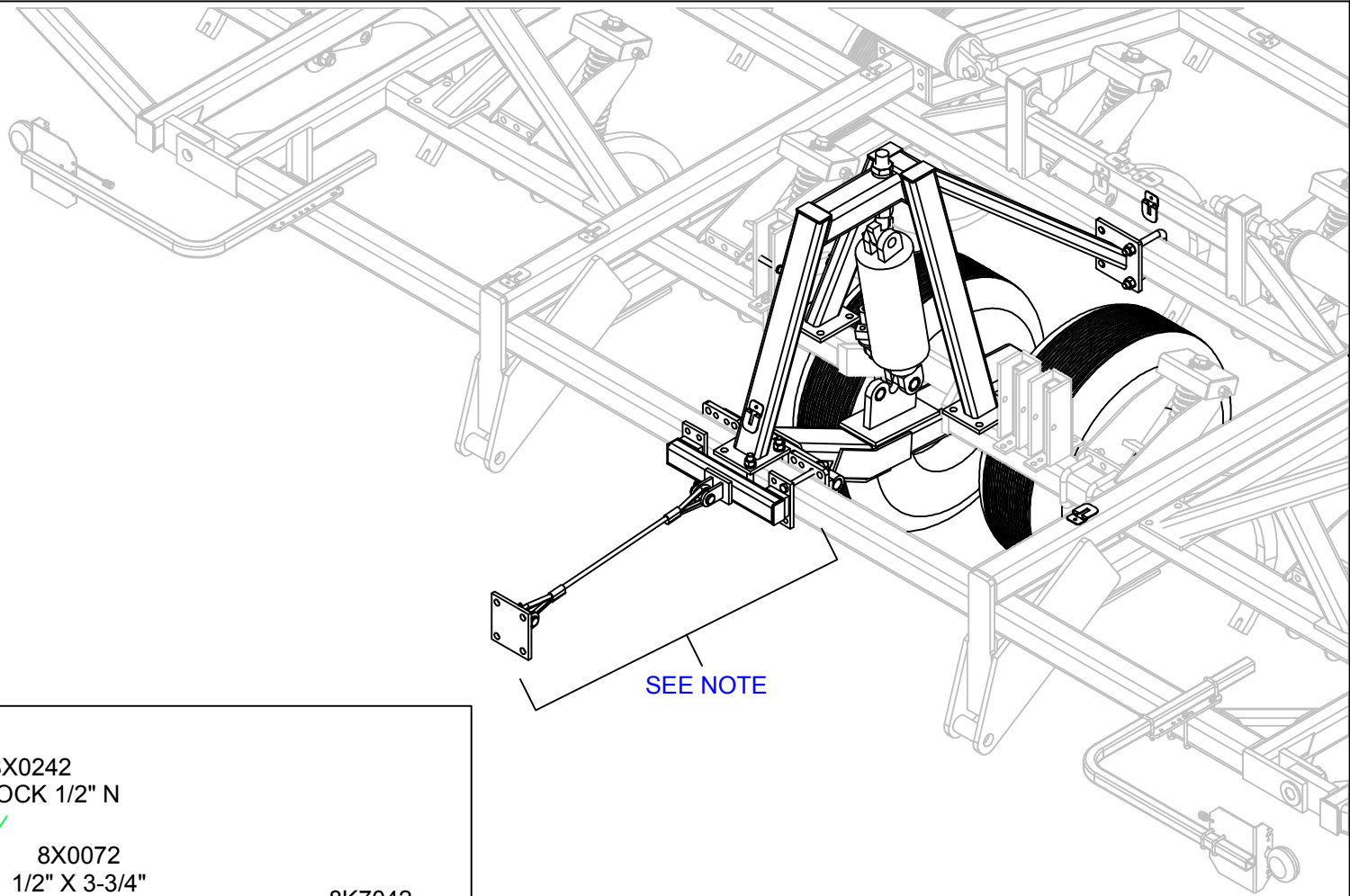


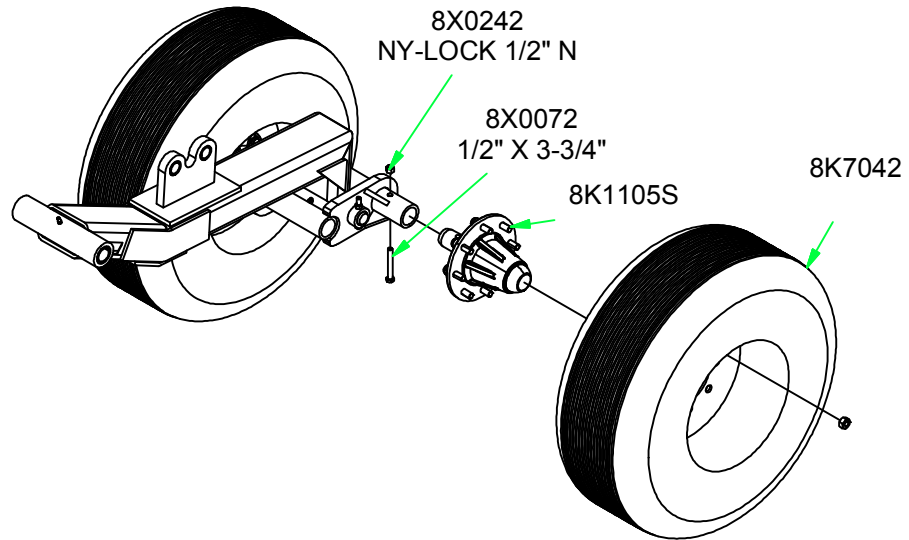
REMOVE HITCH AS SHOWN

5/22/2012

9T6012.iam/HITCH REMOVAL

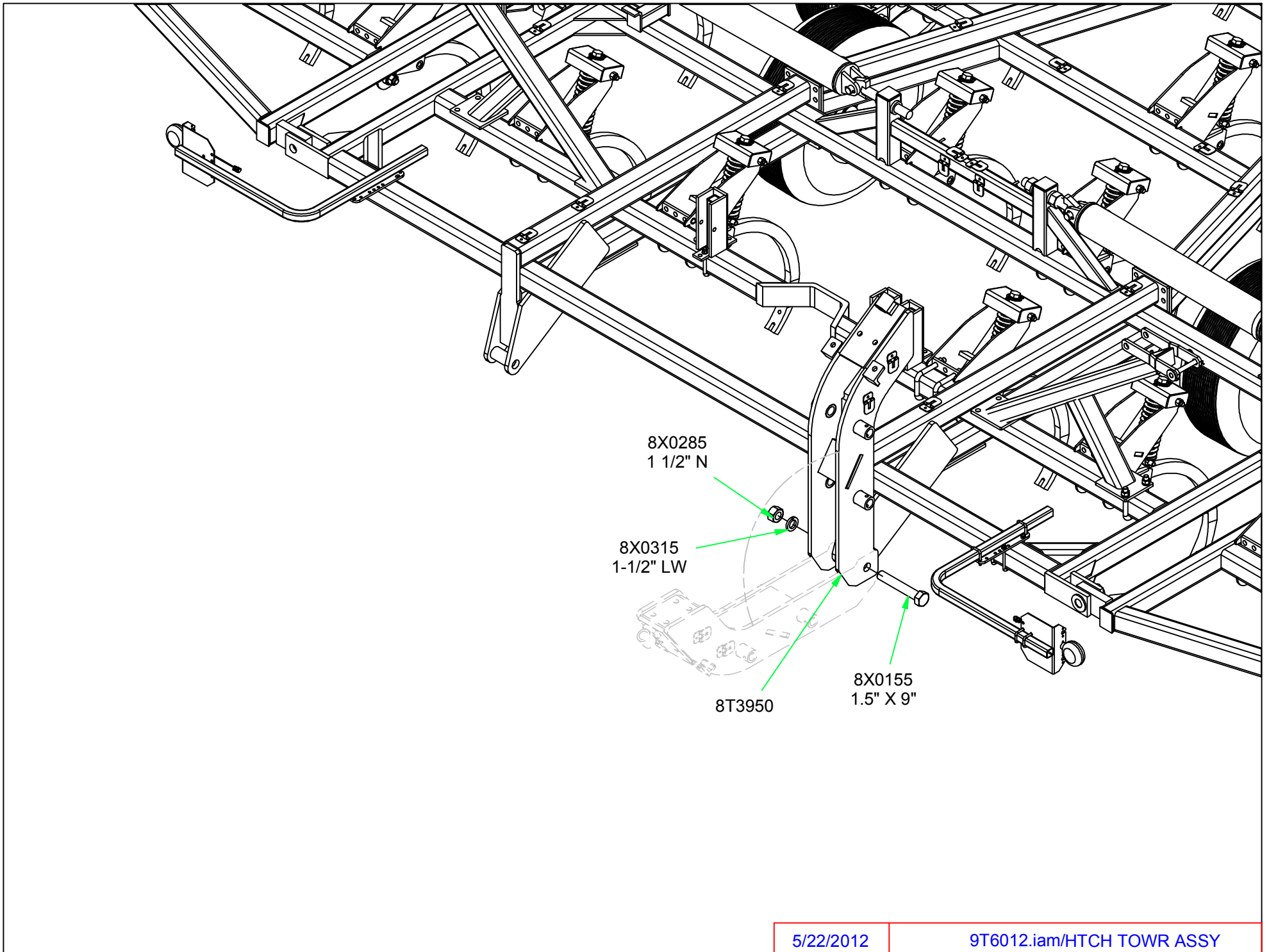


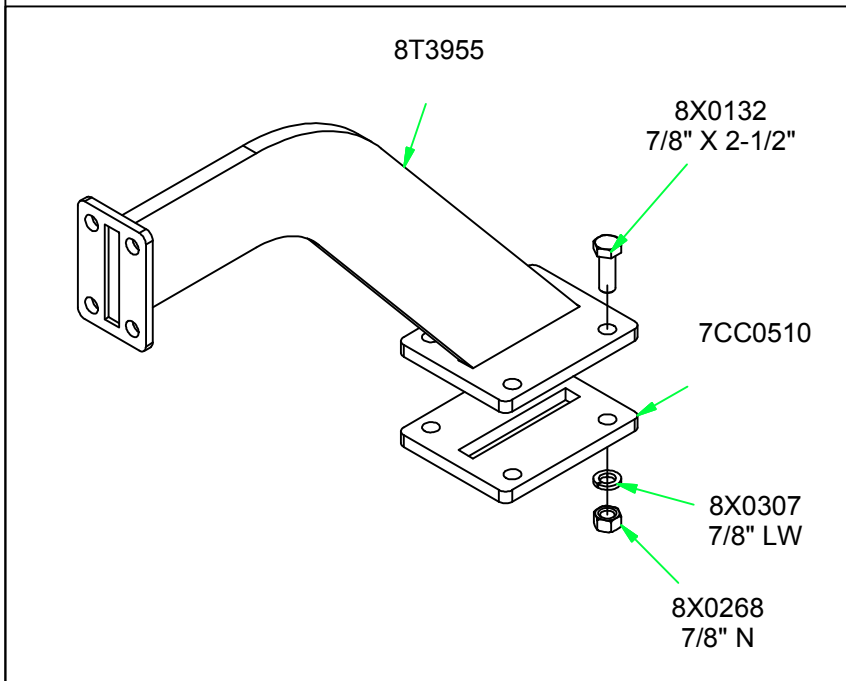
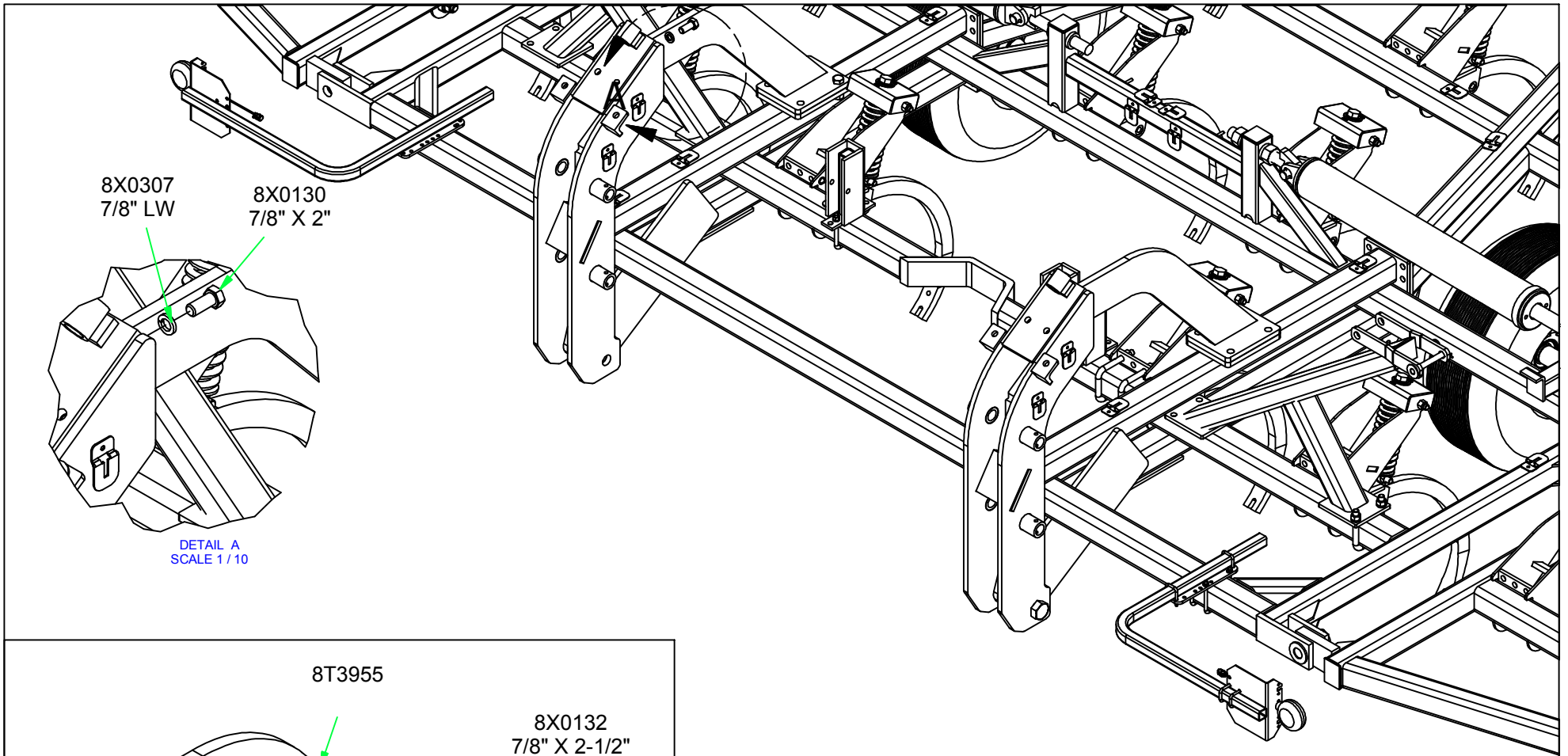
SEE NOTE

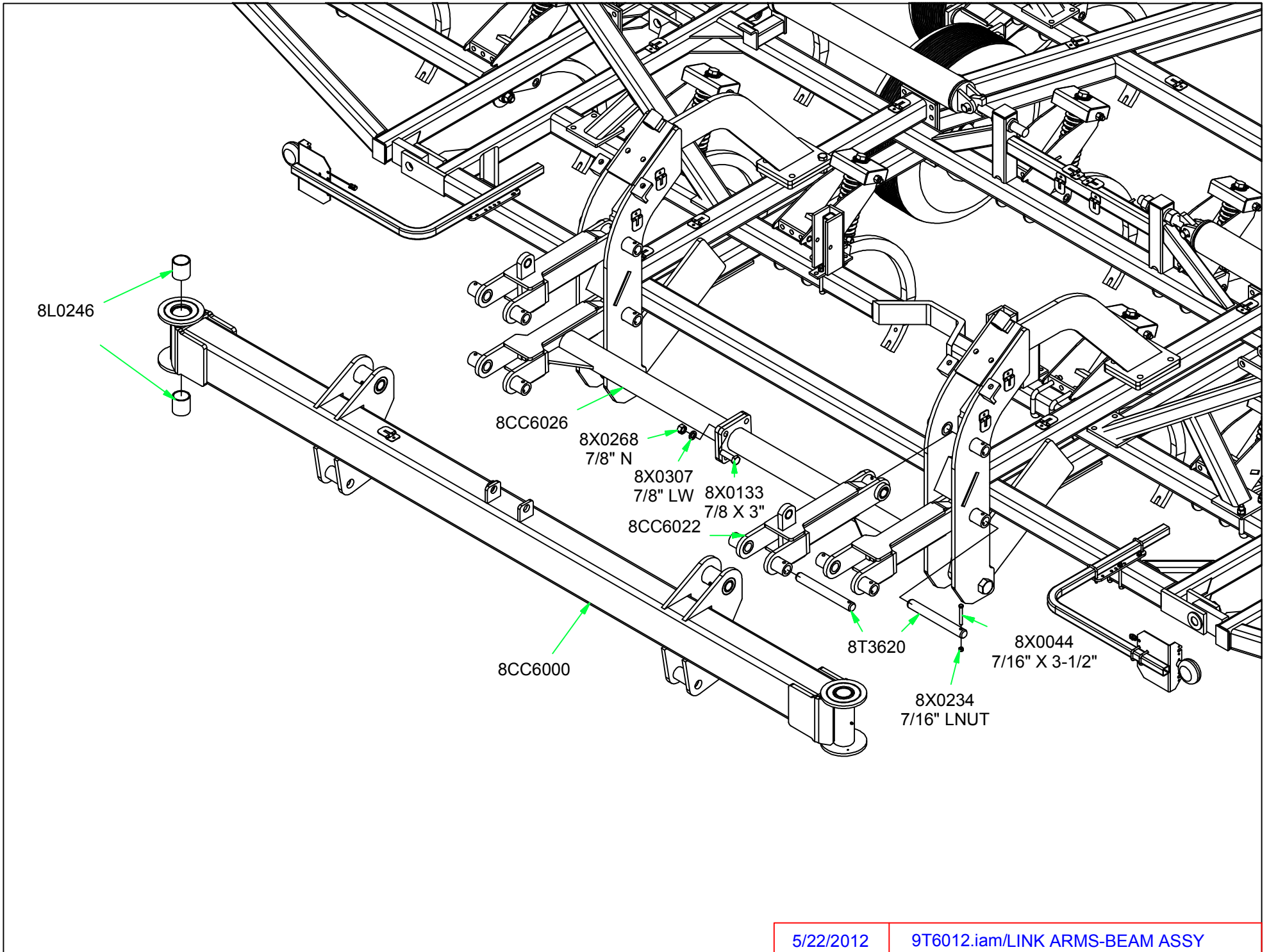


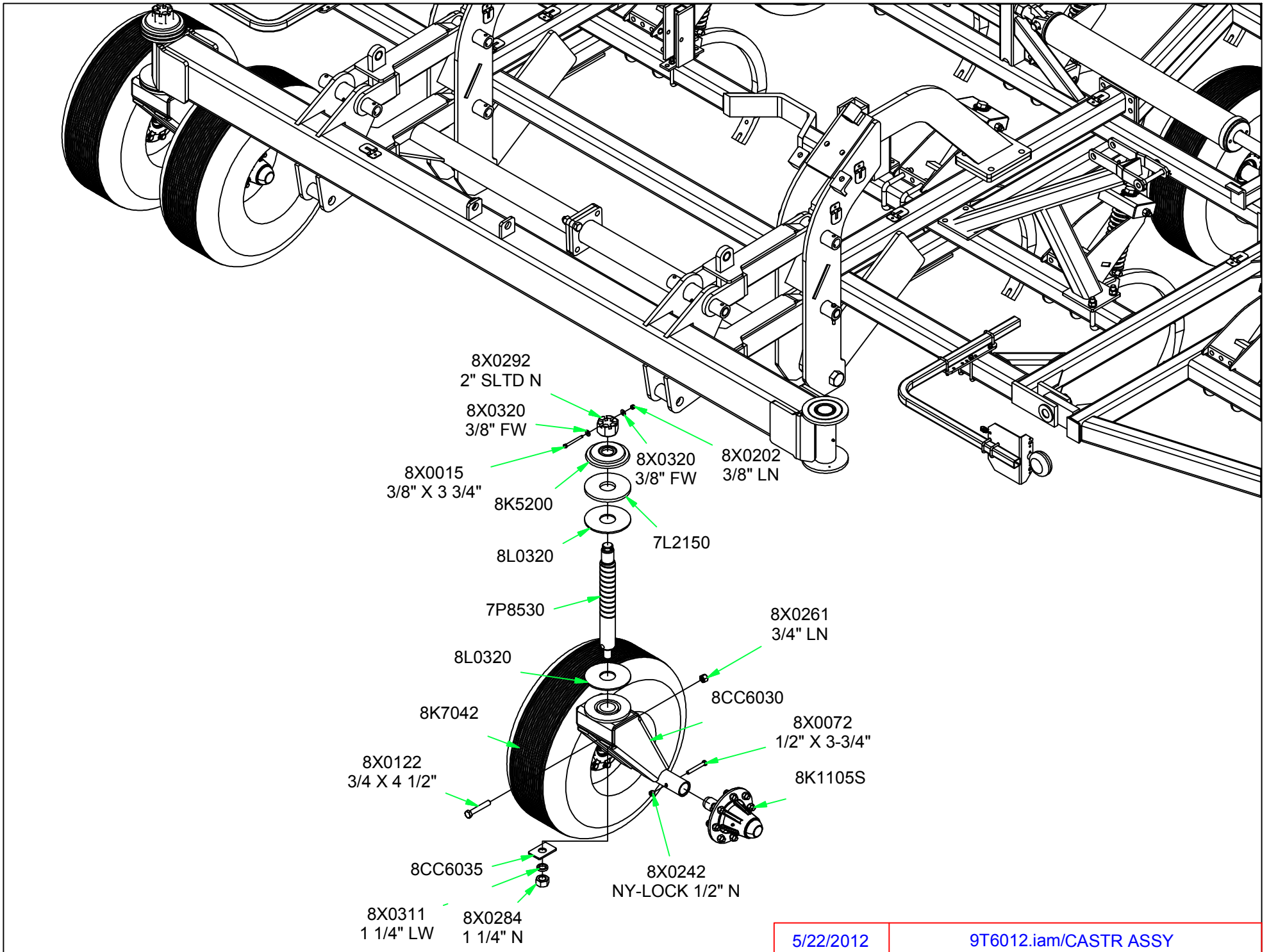
REMOVE HIGHLIGHTED COMPONENTS.
REMOVE WHEEL/TIRE AND HUB FROM
WALKING TANDEM.
THESE PARTS WILL BE RE-USED
NOTE:

LIMIT CABLE ONLY USED ON 40' - 44' WITH
REAR HITCH, AND ALL 50' - 60' MACHINES.







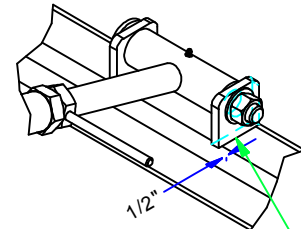
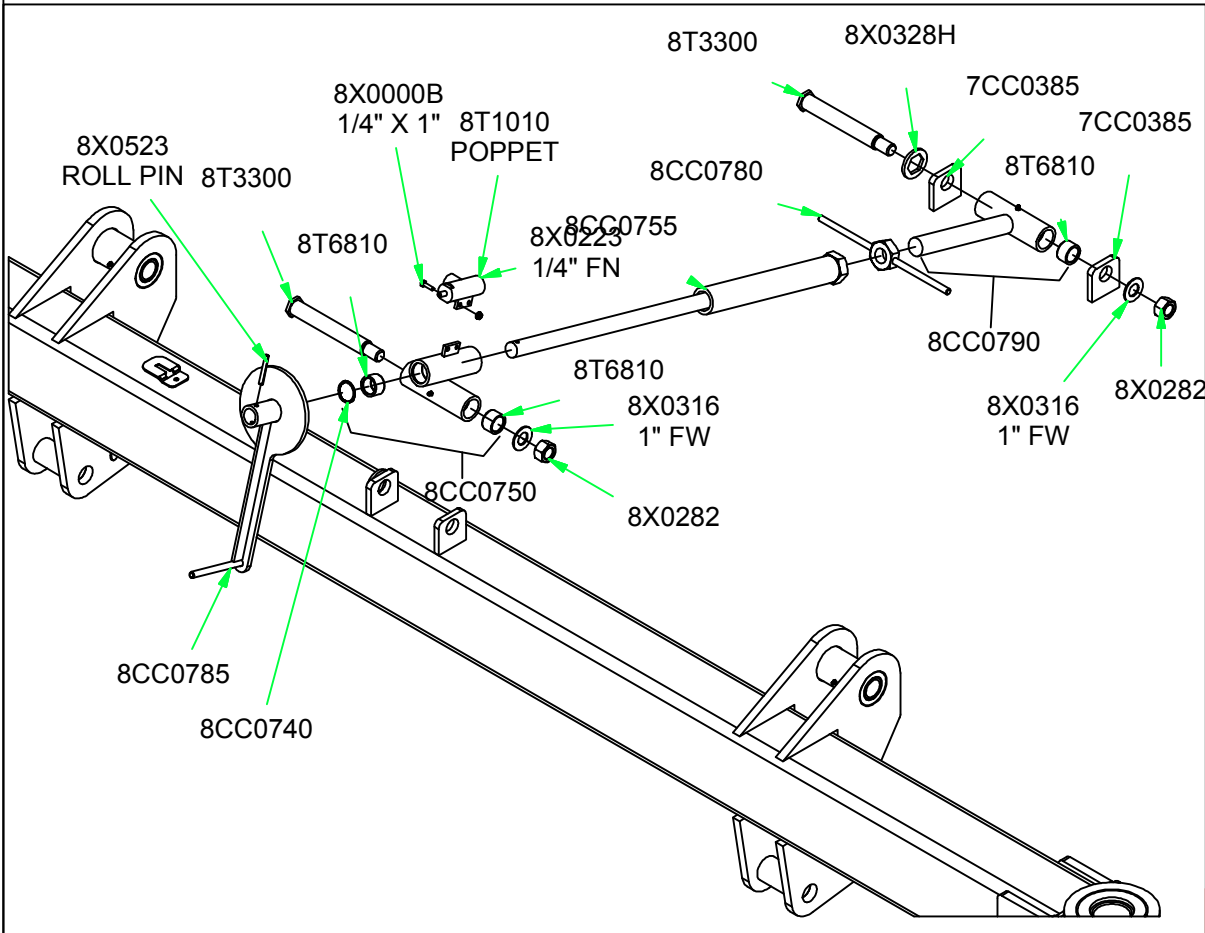
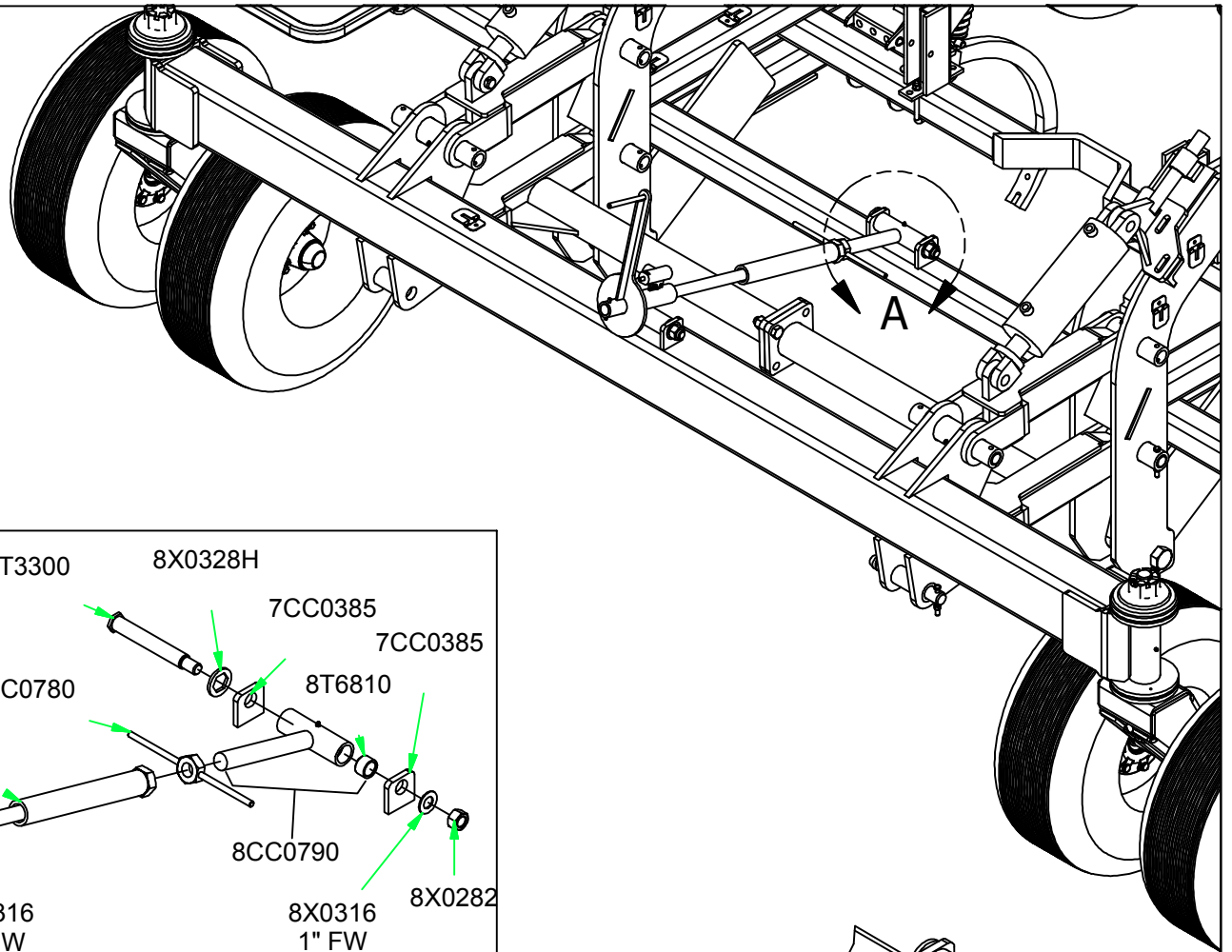


5/22/2012

9T6012.iam/CASTR ASSY

-
- 8X0111
3/4" X 2-1/2"
- 8X0306
3/4" LW
- 8D9108
1/4 X 2" RP
- 8K9106
- 8CC6028
- 8K9106
- 8X0318
3/4" FW
- 8X0285
1 1/2" N
- The diagram shows a complex mechanical assembly, likely a vehicle chassis or a large machine frame, with various structural members and wheels. A specific sub-assembly is shown in an exploded view, with green arrows pointing to the following parts:
- 8X0111: A long structural member, 3/4" wide by 2-1/2" long.
 - 8X0306: A 3/4" wide link or washer (LW).
 - 8D9108: A 1/4" diameter by 2" long rod pin (RP).
 - 8K9106: A small bush or sleeve.
 - 8CC6028: A cylindrical component, possibly a bearing or a spacer.
 - 8K9106: Another small bush or sleeve.
 - 8X0318: A 3/4" wide flange or washer (FW).
 - 8X0285: A 1 1/2" diameter nut (N).

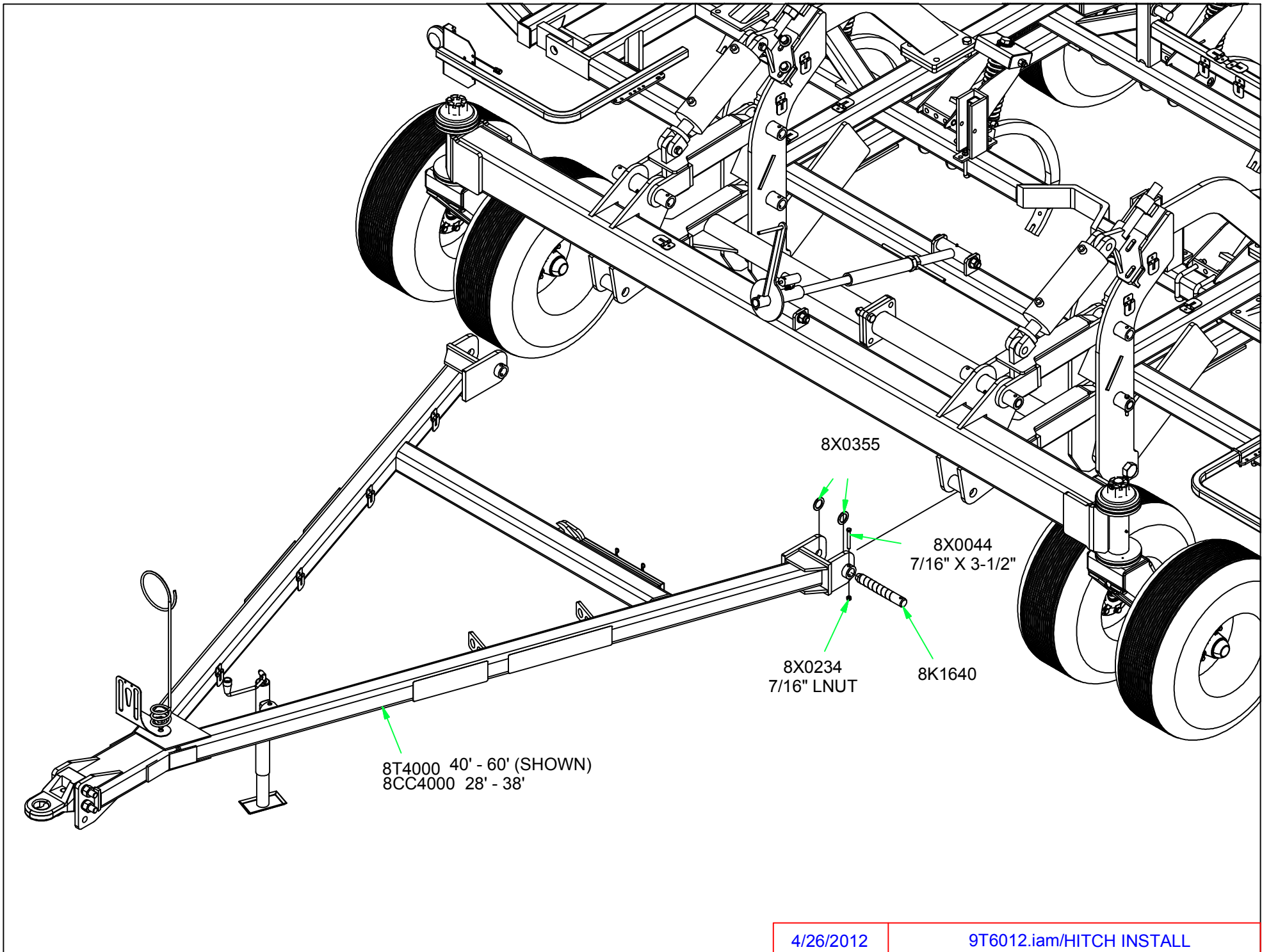
**SINGLE POINT DEPTH CONTROL
USED ON 5-SECTION (50' - 60')
CHISEL PLOWS ONLY.**

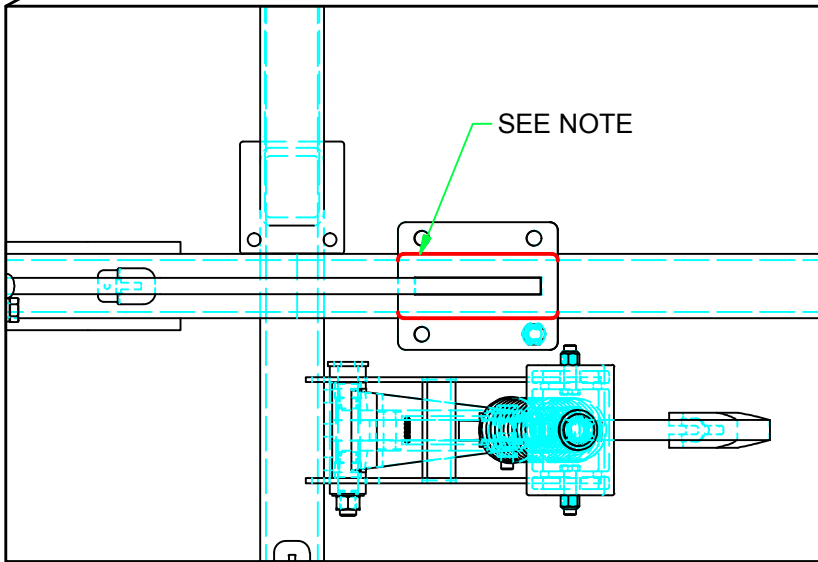
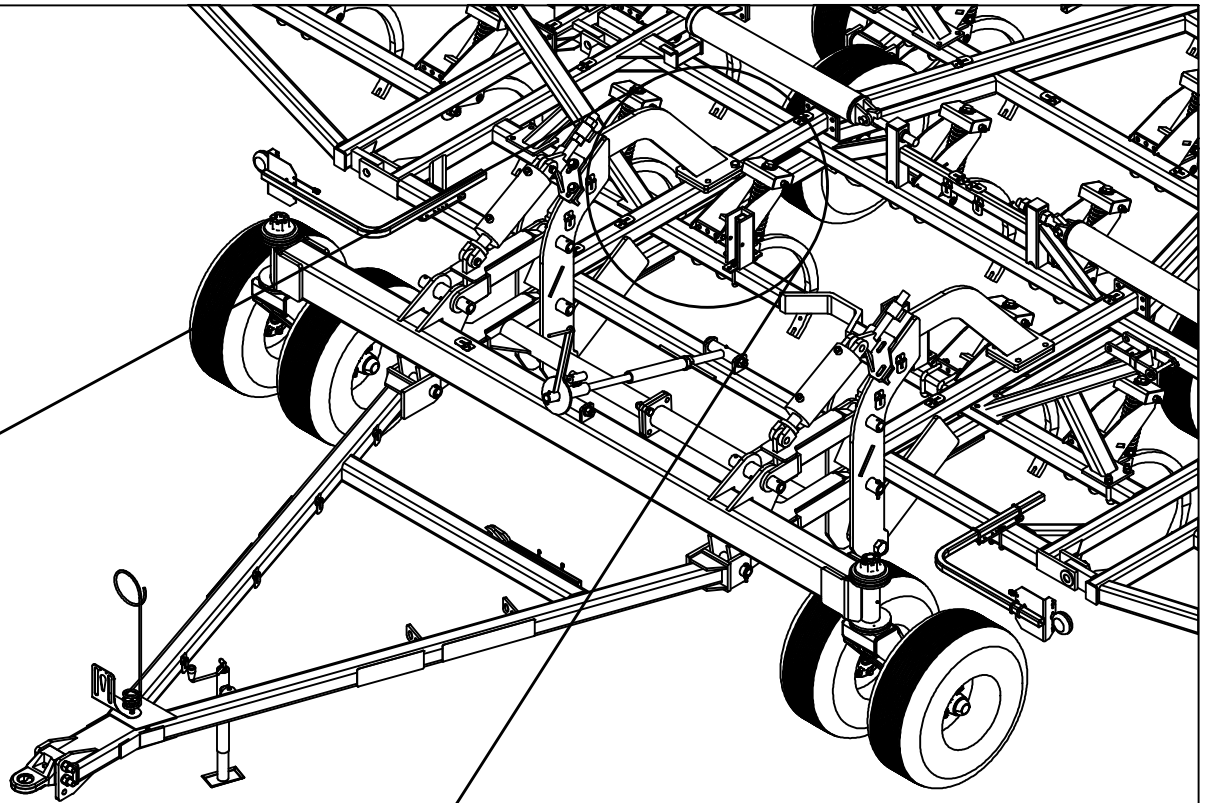


SEE NOTE

DETAIL A
SCALE 1 / 10

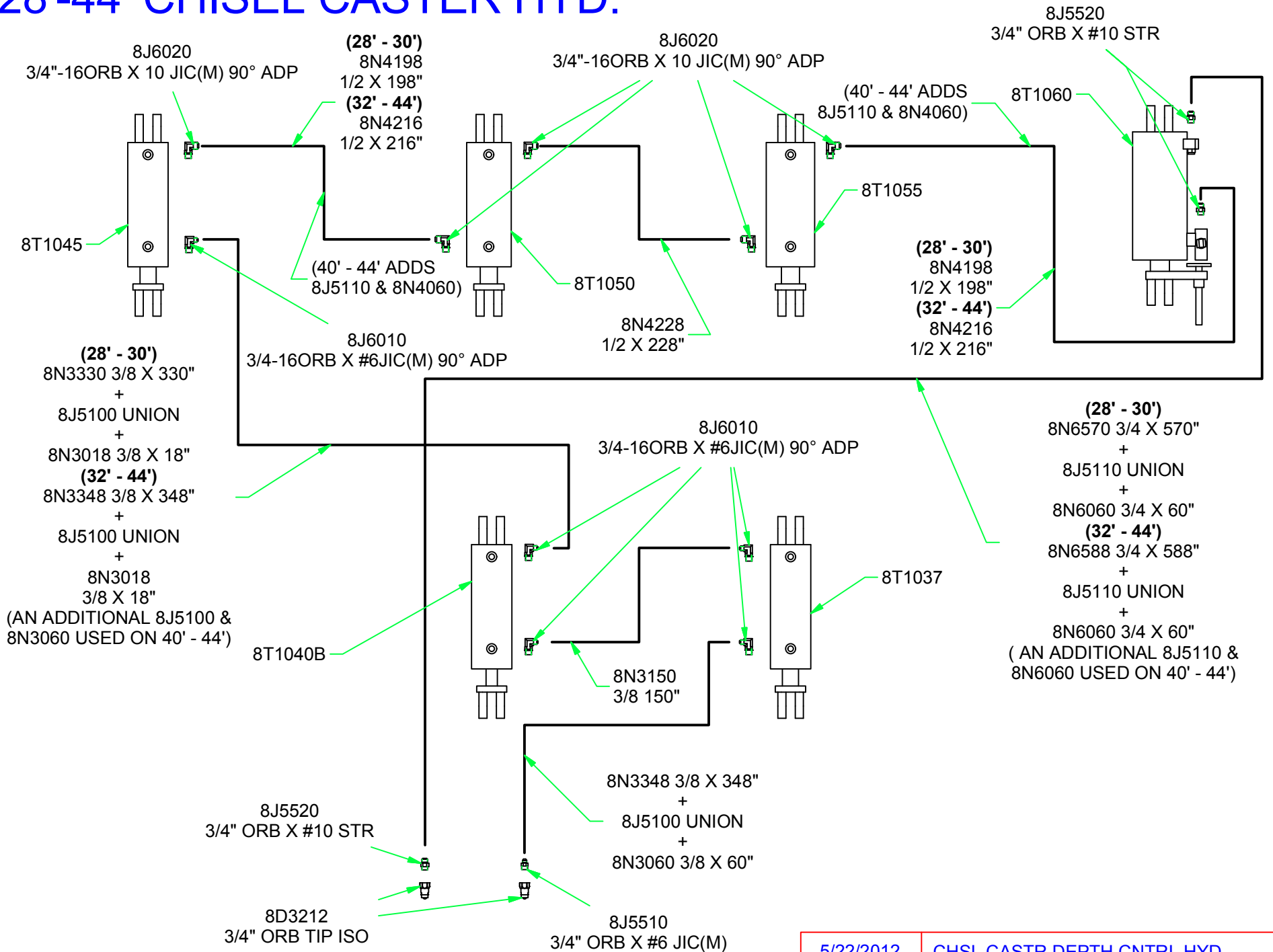
NOTE:
WELD BOTH SIDES OF TAB TO TUBE.
TABS SHOULD BE LOCATED 1/2" BACK
FROM FRONT FACE OF TUBE, AS SHOWN.
BEAD SIZE = 1/4"



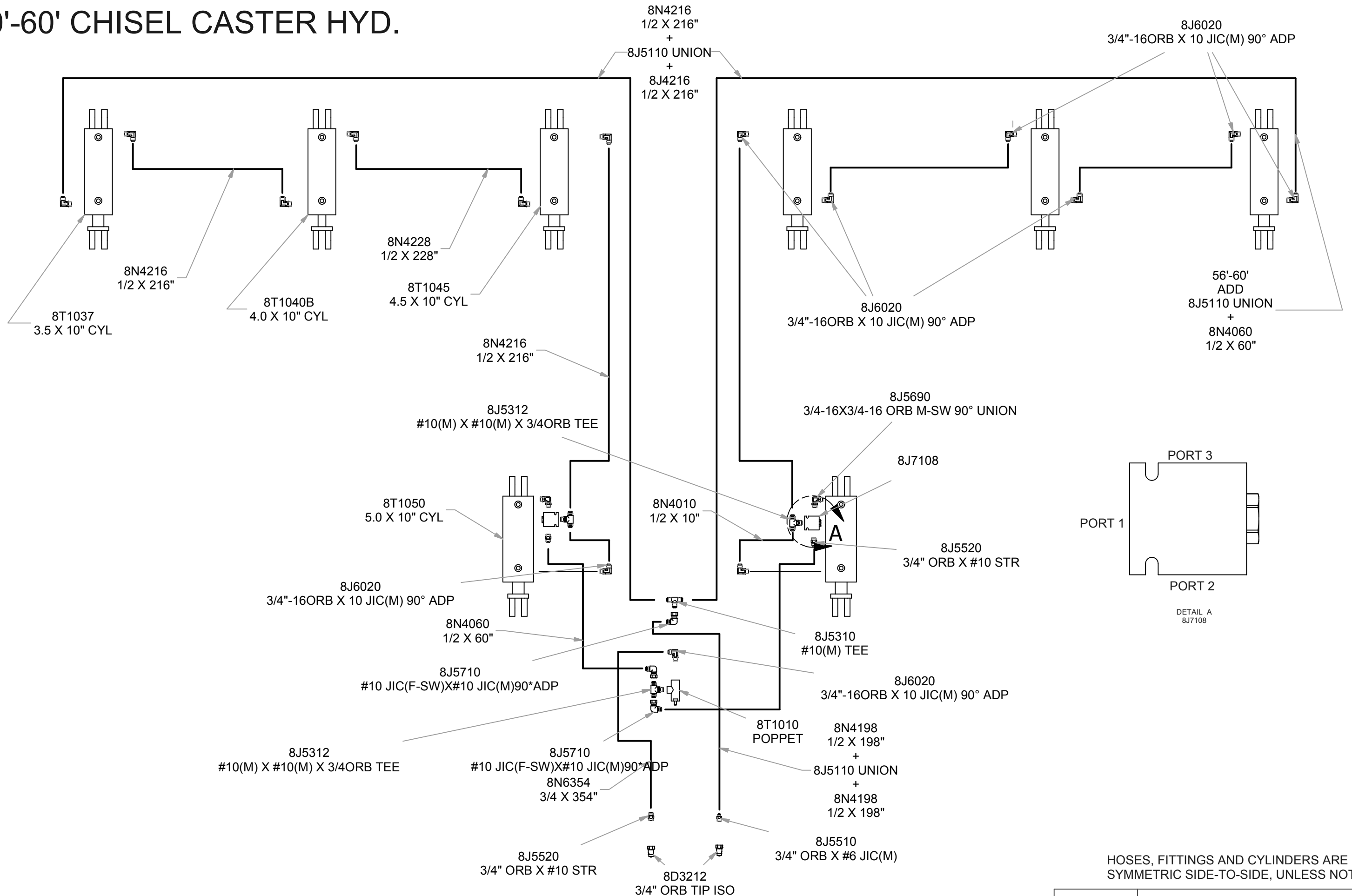


NOTE:
WELD BOTTOM OF BOLT PLATE TO TUBE AS SHOWN.
BEAD SIZE = 3/4". **DO NOT WELD ACROSS FACE OF TUBE.**

28'-44' CHISEL CASTER HYD.



50'-60' CHISEL CASTER HYD.



HOSES, FITTINGS AND CYLINDERS ARE SYMMETRIC SIDE-TO-SIDE, UNLESS NOTED