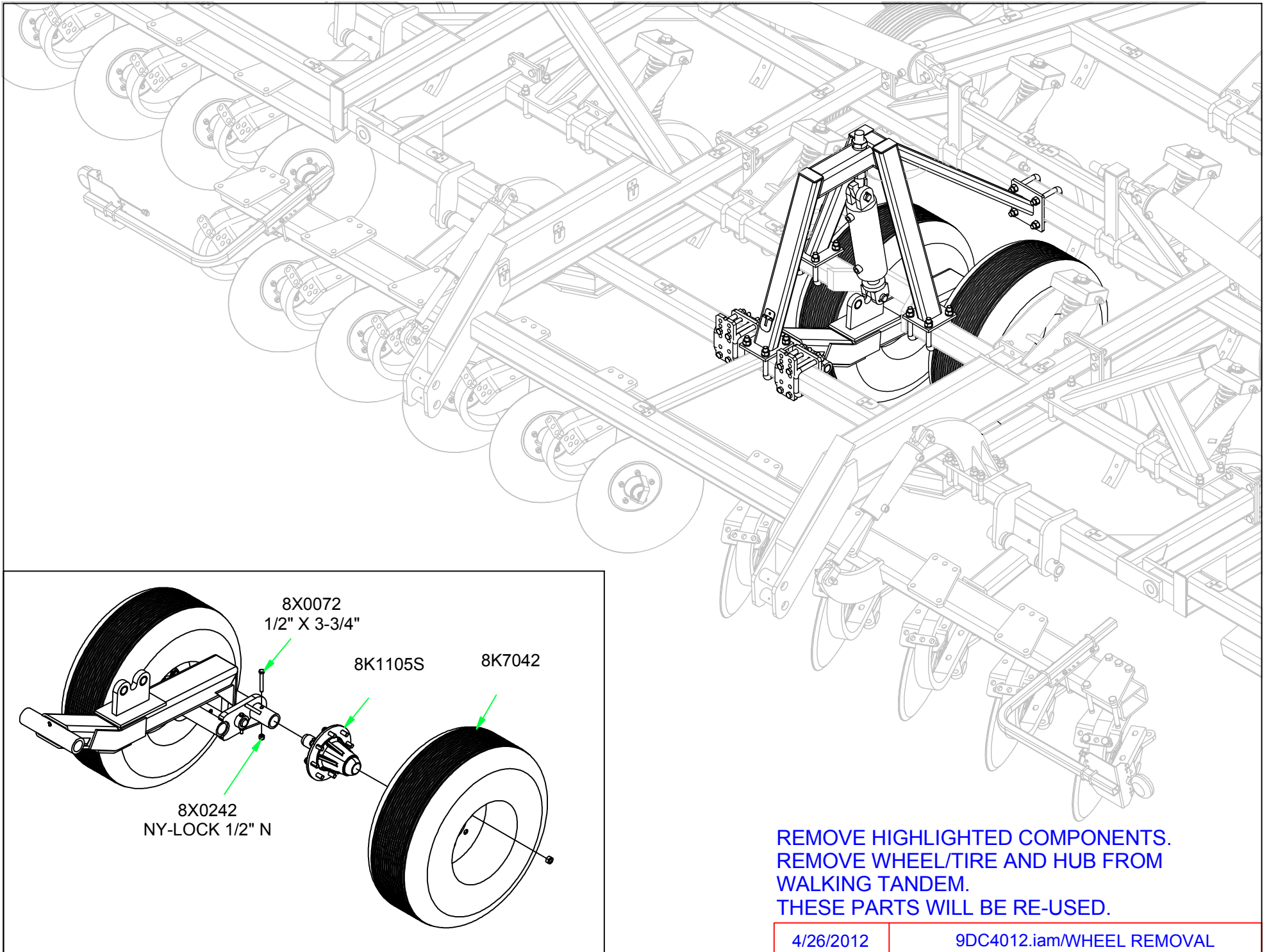
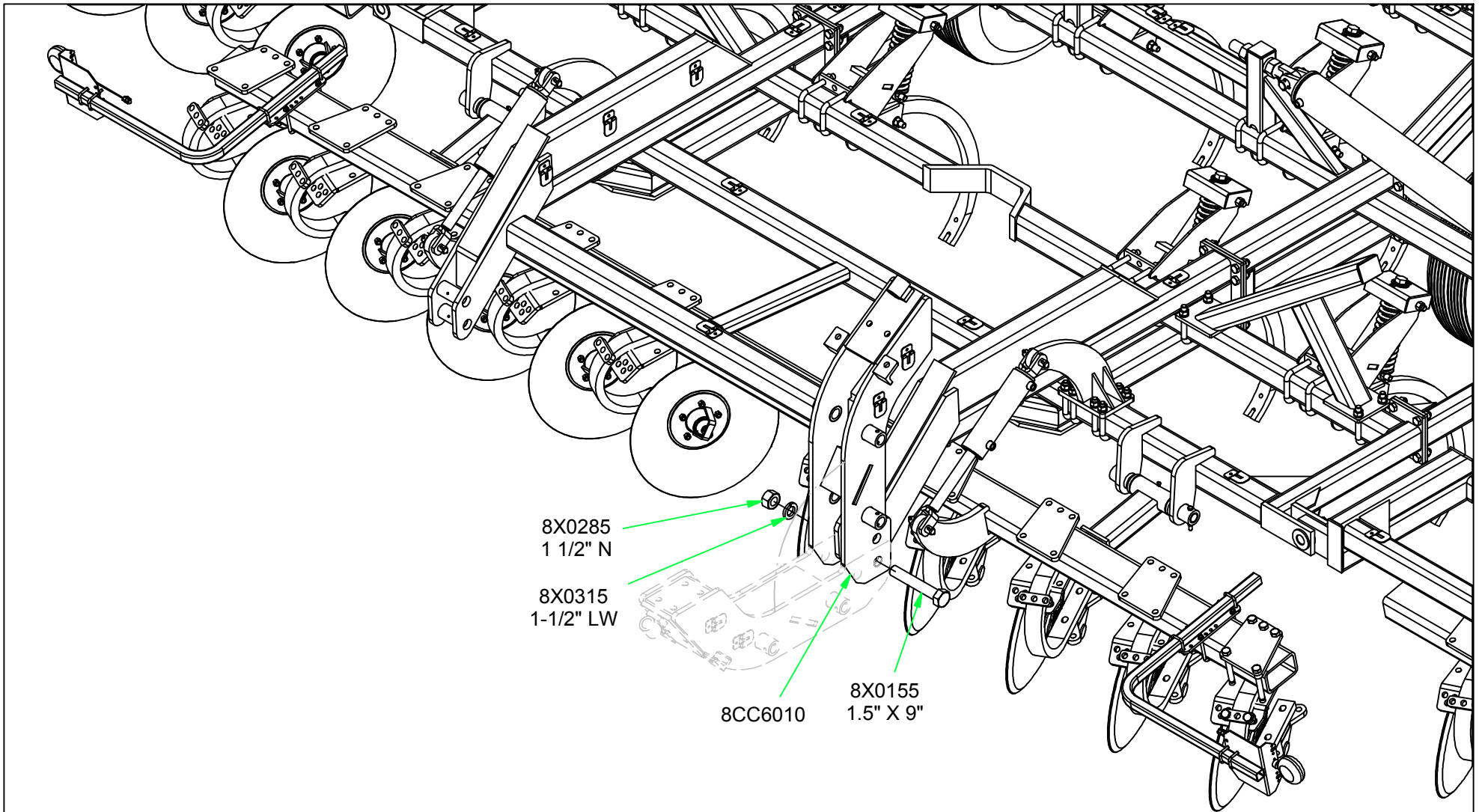


REMOVE HITCH AS SHOWN



REMOVE HIGHLIGHTED COMPONENTS.
REMOVE WHEEL/TIRE AND HUB FROM
WALKING TANDEM.
THESE PARTS WILL BE RE-USED.



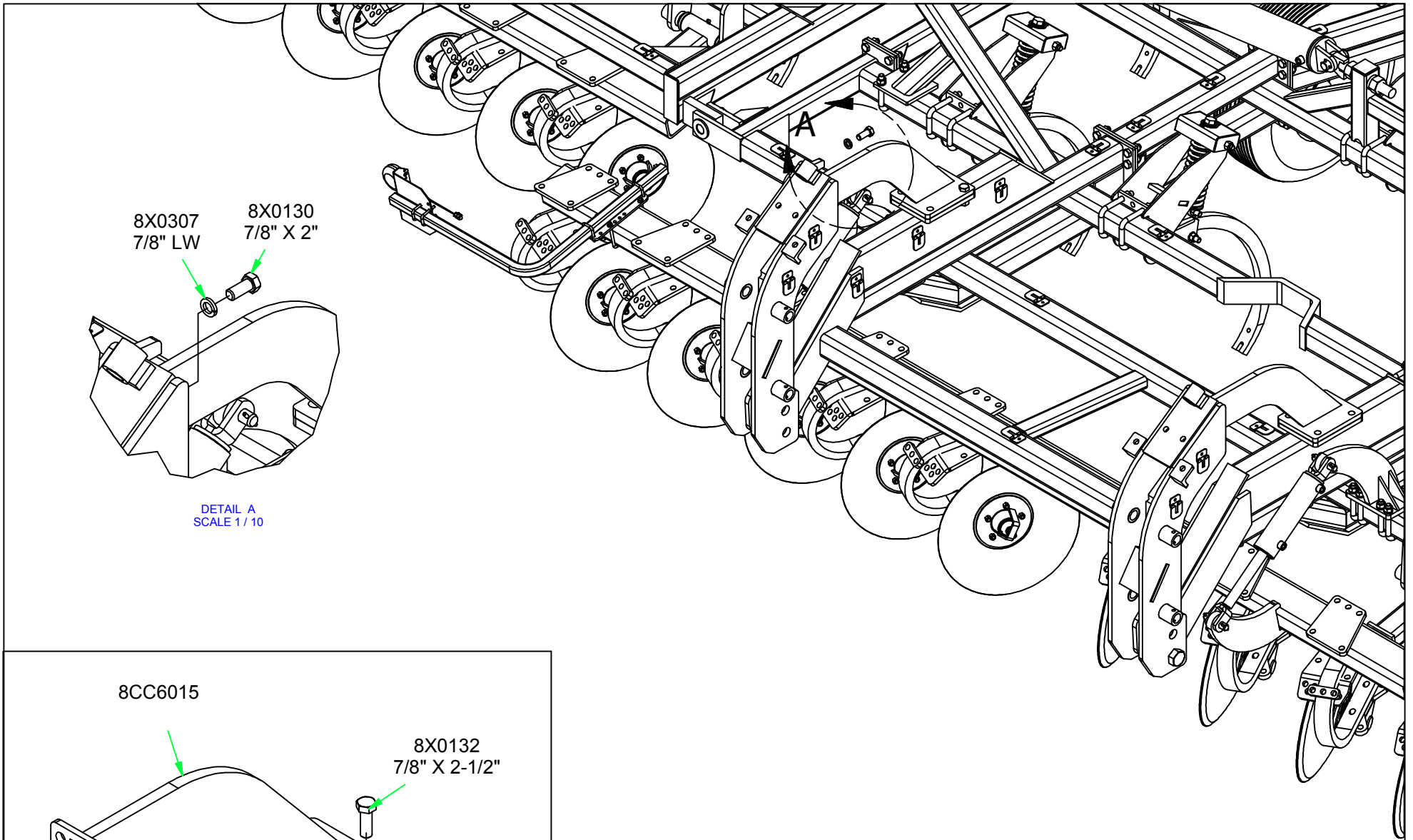
8X0285
1 1/2" N

8X0315
1-1/2" LW

8CC6010

8X0155
1.5" X 9"

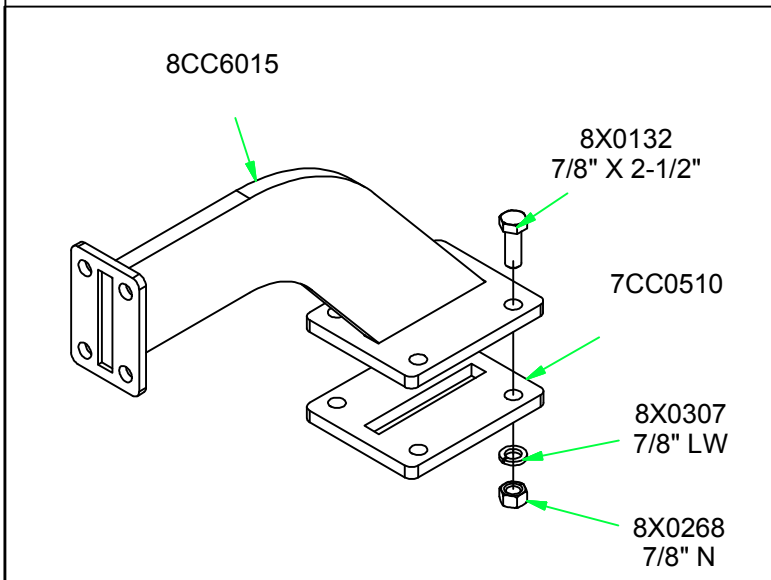
INSTALL LOWER 1 1/2 X 9" BOLT AND ROTATE
8CC6010 HITCH TOWER UP, AS SHOWN,
THEN INSTALL SECOND BOLT.



8X0307
7/8" LW

8X0130
7/8" X 2"

DETAIL A
SCALE 1 / 10



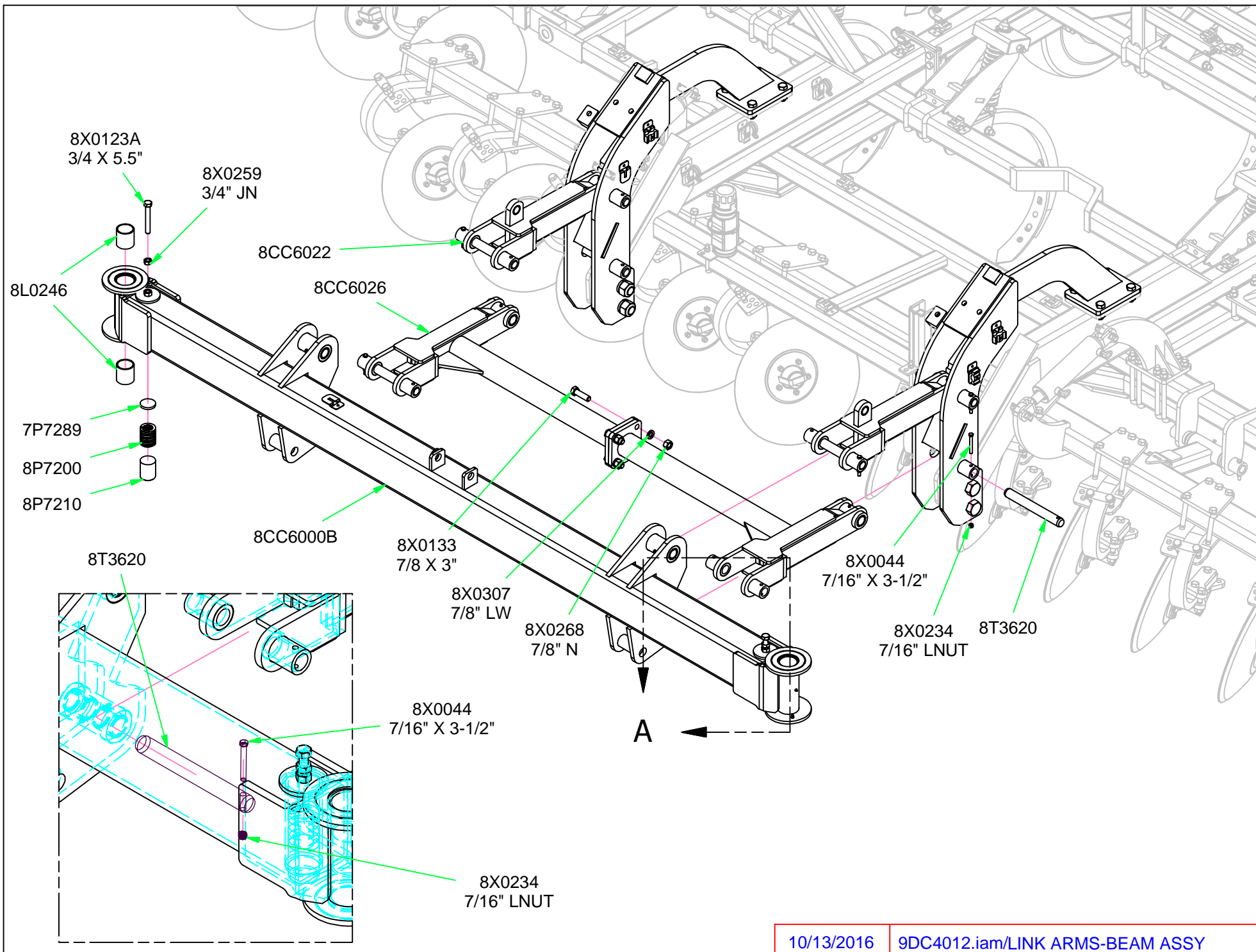
8CC6015

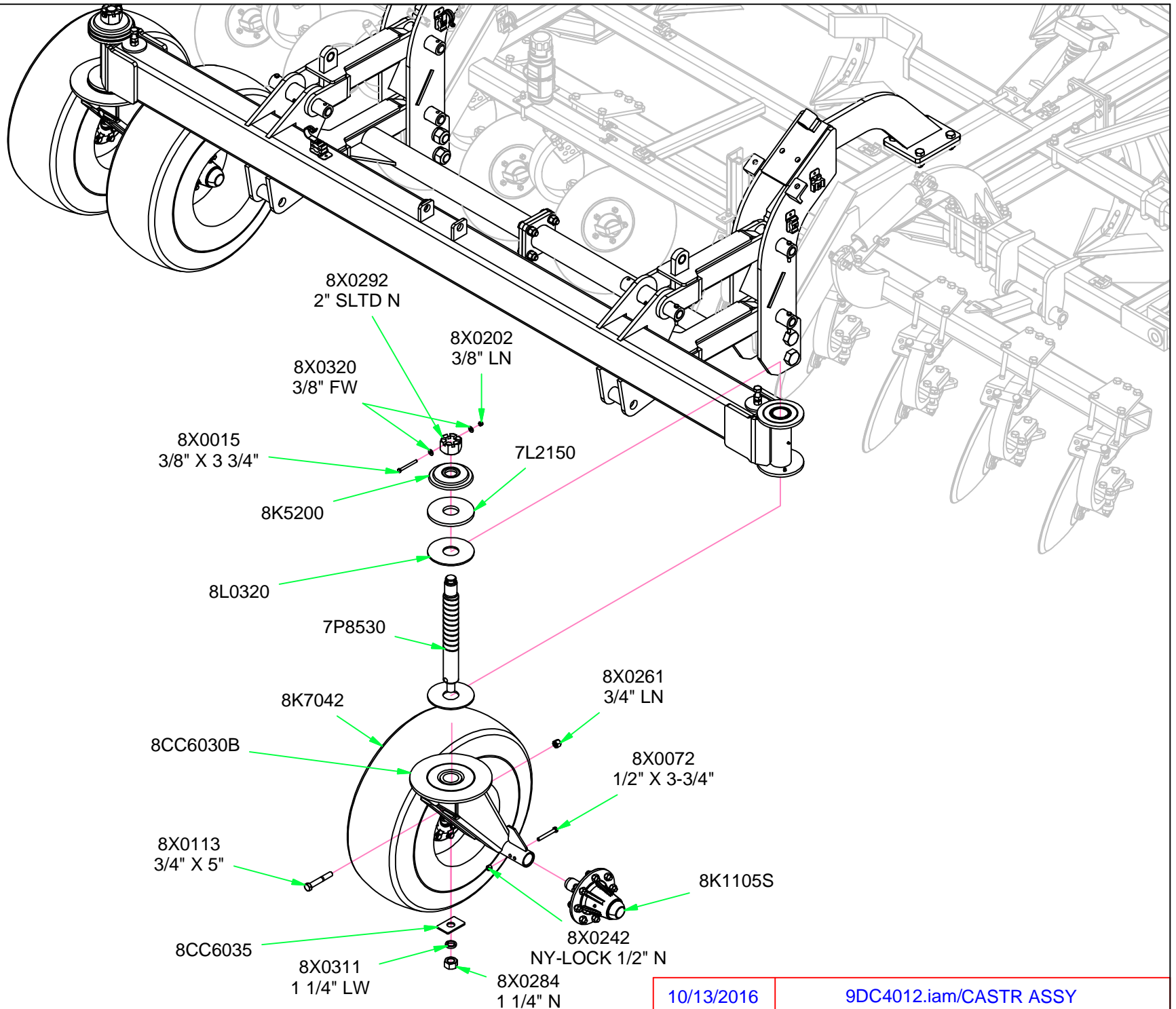
8X0132
7/8" X 2-1/2"

7CC0510

8X0307
7/8" LW

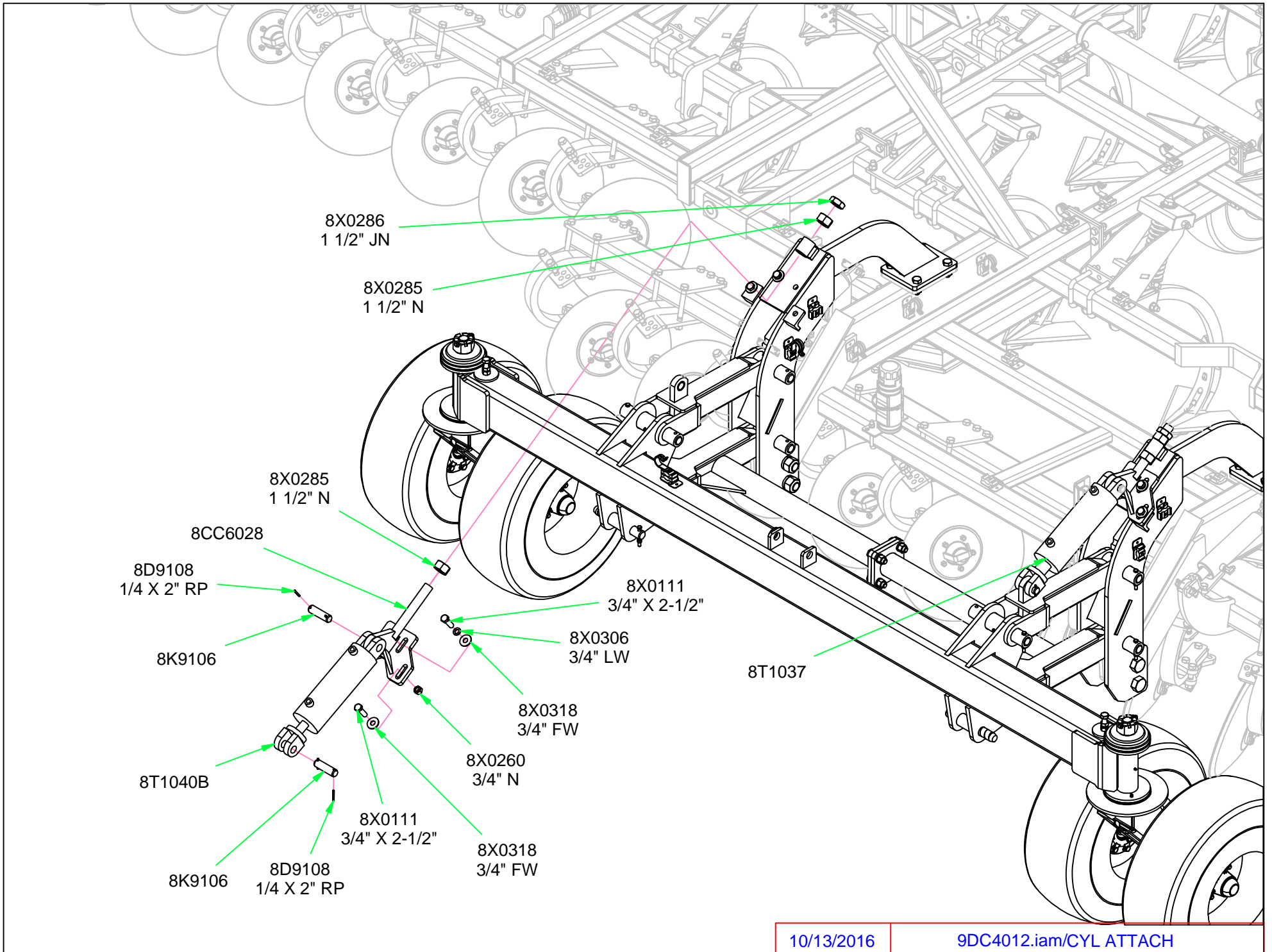
8X0268
7/8" N

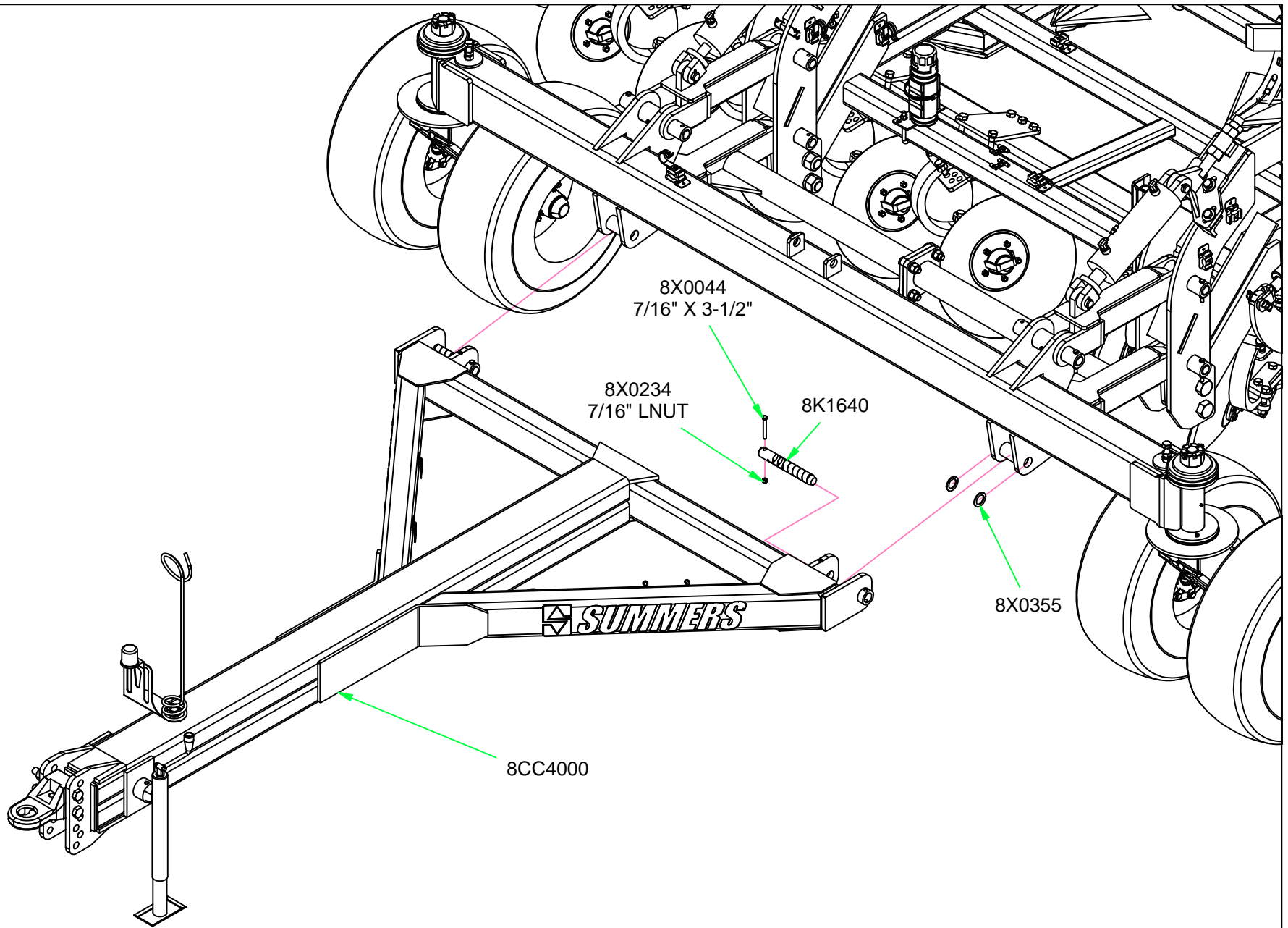




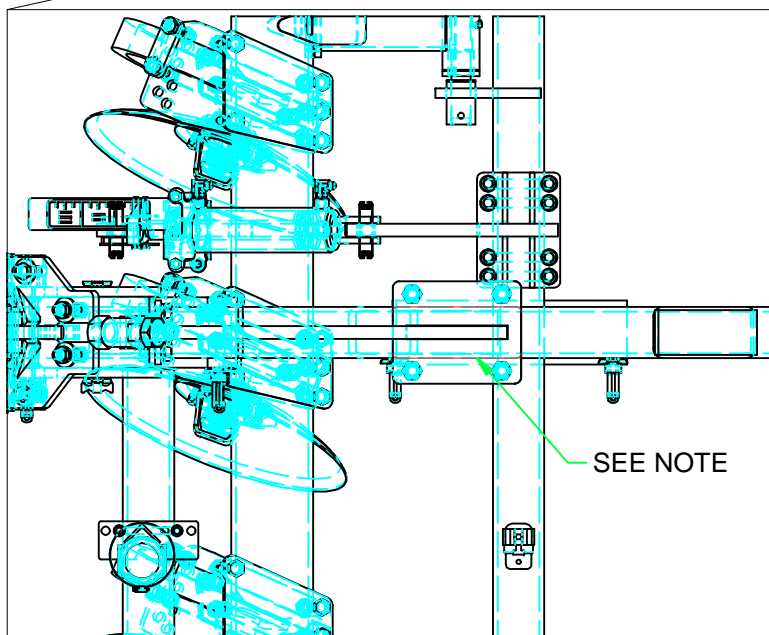
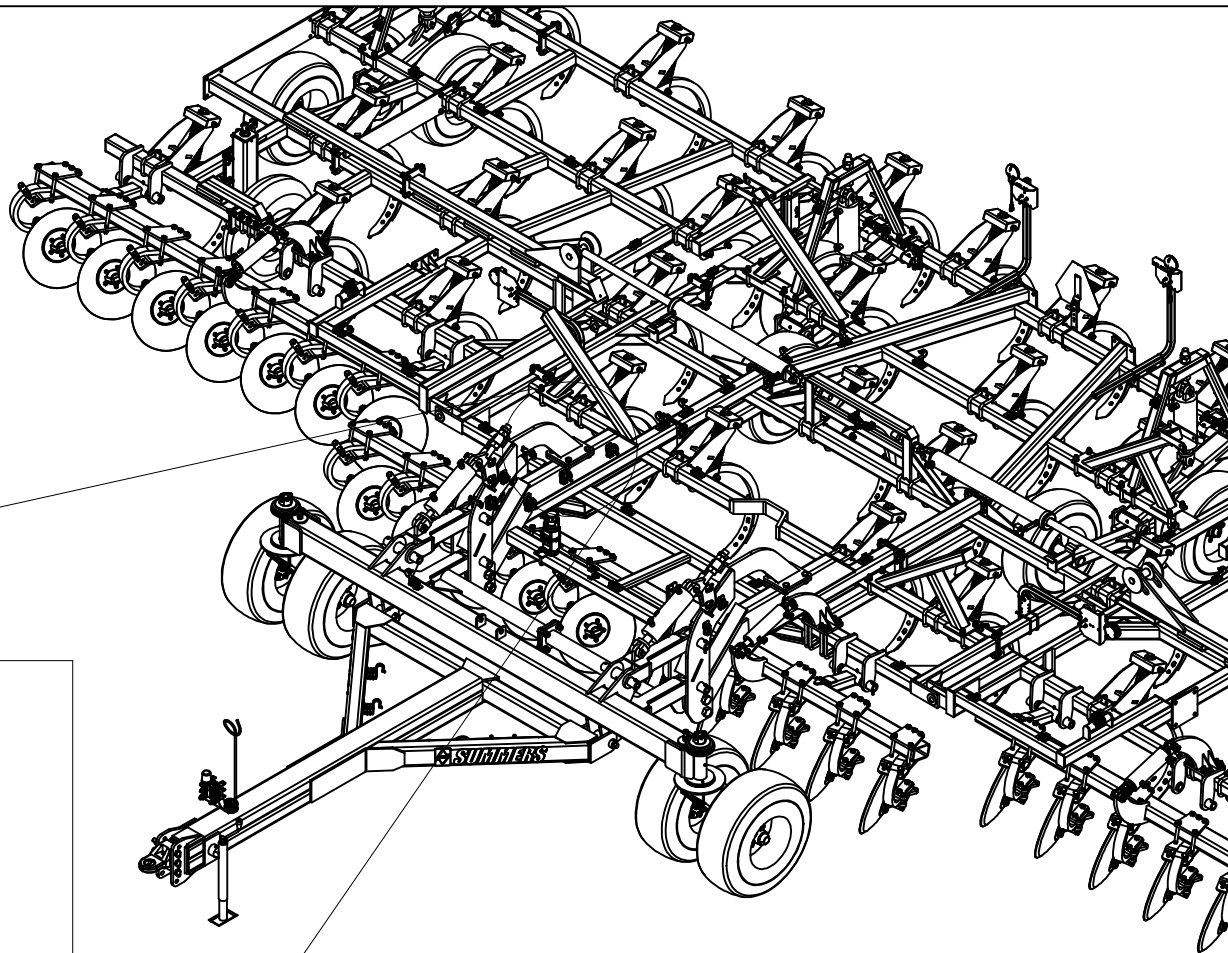
10/13/2016

9DC4012.iam/CASTR ASSY





REINSTALL HITCH AS SHOWN



SEE NOTE

NOTE:
WELD BOTTOM OF BOLT PLATE TO TUBE AS SHOWN.
BEAD SIZE = 3/4". **DO NOT WELD ACROSS FACE OF TUBE.**

10/13/2016

9DC4012.iam/BOLT PLATE WELDING

32'-40' DISK- / COULTER- CHISEL CASTER HYD.

